

2017 Toyota C-HR S, 4 New Tyres, 4 Grade



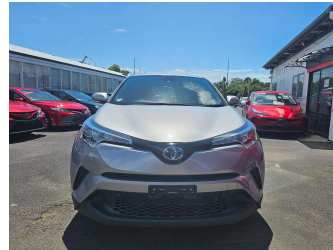
Z-MOTORS
 HIGH QUALITY & EXCELLENT SERVICE

- 4.5 GRADE ✓
- 4.5 GRADE ✓
- 4.5 GRADE ✓
- 4.5 GRADE ✓
- 4.5 GRADE ✓
- 4.5 GRADE ✓
- 4.5 GRADE ✓
- 4.5 GRADE ✓
- 4.5 GRADE ✓
- 4.5 GRADE ✓

Our imports are exclusively Grade 4 or above
 #1 Rated Dealership 2024 BuyerScore Award
 #230+ 5 star Google Reviews

BOOK NOW

https://www.zmotors.co.nz
 09 441 4583
 sales@zmotorsltd.co.nz
 107 Wairau Road, Wairau Valley, Auckland 0627



Purchase Price

\$24,880

Includes GST
 Excludes on-road costs of \$595

Indicative repayments

\$164.25 per week*

Based on a 48 month term & no deposit.
 Total repayments (208) = **\$34,163.88**

finance NOW

Gain peace of mind with
 Mechanical Breakdown
 Insurance. **Ask us how.**

Top features

- » Adaptive Cruise Contro...
- » Alloy Wheels
- » Bluetooth
- » Electric Mirrors (Retr...
- » Electric Windows
- » Engine Push Start
- » HID Headlights
- » Keyless Entry
- » Lane Departure Warning
- » Remote Key
- » Reversing Camera

Body Style
RV-SUV

Odometer
25,680 km

Engine
1800 cc

Fuel Type
Hybrid

Transmission
Automatic

Wheels
 -

VIN
7AT0H663X24023911

Interior
 -

Safety

5 star safety rating

Based on 2023 UCSR rating
 for 16-21 models

Reg No.
 -

Ext Colour
Silver

History
 -

Seats
 -

CO2 Emissions
★ ★ ★ ★ ★ ☆
99 grams/km

Energy Economy
★ ★ ★ ★ ☆ ☆
Annual fuel cost of \$1,650
4.2L per 100km

Cost per year is an estimate based
 on petrol price of \$2.80 per litre and
 an average distance of 14000 km.
 Emissions and Energy Economy
 figures standardised to 3P WLTP.

Stock ID: 1588

* Z Motors is not a lender nor a financial adviser. Any amounts displayed should not be seen as an offer of finance or taken as financial advice. The interest rate, fees and loan term used in this calculation may not actually represent those available from lenders. Actual interest rates, fees and loan terms will vary per lender and are typically based on an assessment of your credit risk and responsible lending criteria. Any repayment amounts displayed are indicative only and have been calculated using several other indicative inputs. The interest rate used in this calculation is an arbitrary 13.95%, however exact interest rates vary per lender. The term of the loan used in this calculation is 48 month. Exact terms available vary per lender although options typically include 6, 12, 18, 24, 36, 48 and 60 months. This calculation also includes a typical mandatory fee charged by lenders. This is a one-off establishment fee of \$595.00. Typically, this fee can be paid upfront or, as in this calculation, be capitalised over the contract term, ie. included in the loan amount. This fee can vary per lender and other non-mandatory fees and charges may also apply. The total amount of repayments has been calculated by multiplying 208 weekly repayments (based on a 48 month term) by the weekly repayment amount of \$164.25 which equals \$34,163.88. This calculator does not consider any of your own personal circumstances and we strongly suggest you seek budgeting advice prior to committing to any loan contract. Responsible lending criteria and lender terms and conditions will likely apply to any finalised loan contract. Proof of security and/or vehicle insurance may also be required before proceeding.